

Anti-H_MELTF(CD228) hIgG1 Antibody (hL49 HALC)

产品信息

GM-38396AB-10	10 µg
GM-38396AB-100	100 µg
GM-38396AB-1000	1 mg

抗体信息

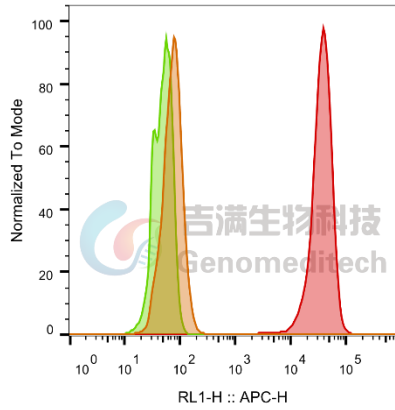
Species Reactivity	Human
Clone	hL49 HALC
Source/Isotype	Monoclonal human IgG1, κ
Application	Flow cytometry
Specificity	Detects MELTF.
Gene	MELTF(CD228)
Other Names	MAP97, MFI2, MTF1, MTf
Gene ID	4241 (human)
Background	Melanotransferrin is a protein that in humans is encoded by the MELTF gene. MELTF has also recently been designated CD228 (cluster of differentiation 228). The protein encoded by this gene is a cell-surface glycoprotein found on melanoma cells. The protein shares sequence similarity and iron-binding properties with members of the transferrin superfamily. The importance of the iron binding function has not yet been identified. This gene resides in the same region of chromosome 3 as members of the transferrin superfamily. Alternative splicing results in two transcript variants. It is part of neural crest tissue, often present in melanotic neuroectodermal tumor of infancy.
Storage	Store at 2-8°C short term (1-2 weeks).Store at ≤ -20°C long term. Avoid repeated freeze-thaw.
Formulation	Phosphate-buffered solution, pH 7.2.
Endotoxin	< 1 EU/mg, determined by LAL gel clotting assay

Version:3.3

Data Examples

Flow cytometry

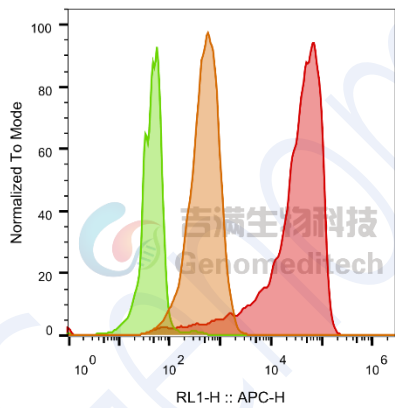
H_MELTF(CD228) CHO-K1 Cell Line (Catalog # GM-C21677) was stained with Anti-H_MELTF(CD228) hlgG1 Antibody (Catalog # GM-38396AB) or isotype control antibody, followed by anti-Human IgG APC-conjugated Secondary Antibody.



SampleID	Geometric Mean : RL1-H
CHO-K1 anti-H_MELTF+APC-2nd Ab	73.5
CHO-K1 H_MELTF H_IgG+APC-2nd Ab	49.2
CHO-K1 H_MELTF anti-H_MELTF+APC-2nd Ab	33594

Flow cytometry

H_MELTF(CD228) HEK-293 Cell Line (Catalog # GM-C21678) was stained with Anti-H_MELTF(CD228) hlgG1 Antibody (Catalog # GM-38396AB) or isotype control antibody, followed by anti-Human IgG APC-conjugated Secondary Antibody.



SampleID	Geometric Mean : RL1-H
HEK-293 anti-H_MELTF+APC-2nd Ab	477
HEK-293 H_MELTF H_IgG+APC-2nd Ab	45.2
HEK-293 H_MELTF anti-H_MELTF+APC-2nd Ab	24482

Fig. FACS

Bioactivity-ELISA

Human CD228 Protein; His Tag (Catalog # GM-87529RP) was immobilized at 1 µg/ml (100 µL/well) on Anti-His mIgG2a Antibody (Catalog # GM-59493AB) (0.6 µg/well) precoated. Increasing concentrations of Anti-H_MELTF(CD228) hIgG1 Antibody(hL49 HALC) (Catalog # GM-38396AB) were added.

Human CD228 Protein; His Tag, ELISA
0.6 µg Anti-His mIgG2a Antibody+0.1 µg Human CD228 Protein; His Tag
of per well

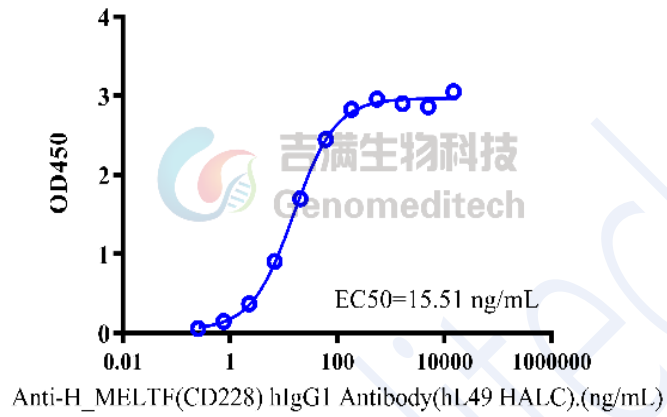


Fig. Assay